

VERI SANGUINE SPIRITUS

SEQUENTIA MISSAE IN DIE PENTECOSTES GREGORIANO

Ve ni, San cte Spi - ri tus, et e mit te cae - li tus lu cis tu ae ra - di um.



4 Ve ni, pa ter pau - pe rum ve ni da tor mu - ne rum ve ni, lu men cor - di um.



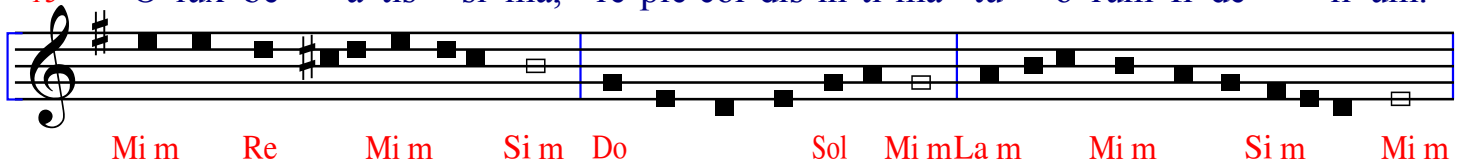
7 Con so la tor o - pti me, dul cis ho - spes a - ni mae, dul ce re - fri ge - ri um.



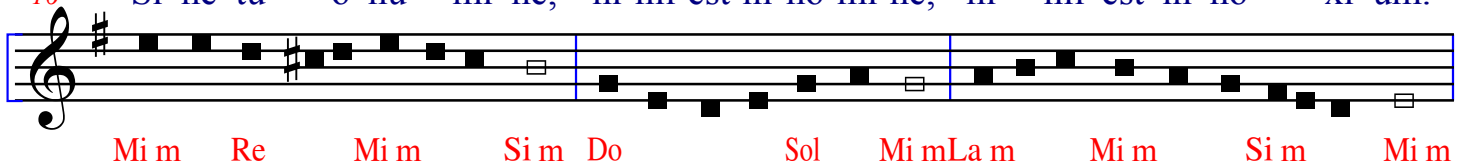
10 In la bo re - re qui es, in ae stu - tem pe - ri es in fle tu - so - la ti um.



13 O lux be - a tis - si ma, re ple cor dis in ti ma tu - o rum fi de - li um.



16 Si ne tu - o nu - mi ne, ni hil est in ho mi ne, ni - hil est in no - xi um.



19 La va quod - est sor - di um, ri ga quod - est a - ri dum, sa na quod est sau ci um.



22 Fle cte quod - est ri - gi dum, fo ve quod - est fri - gi dum, re ge quod est de vi um.

Musical notation for the first line of the hymn. It consists of a single staff in G major (one sharp) with a treble clef. The melody is written in a simple, stepwise fashion. The lyrics are written below the staff, with red solfège syllables: Si m, Re, Fa#m, Sol, Re, Mi m, Si m.

25 D tu is fi de li bus, in te con - fi den ti bus, sa crum se pte na ri um.

Musical notation for the second line of the hymn. It consists of a single staff in G major (one sharp) with a treble clef. The melody continues from the previous line. The lyrics are written below the staff, with red solfège syllables: La, Sol, Mi m, Sol, Mi m, Sol, Mi m.

28 Da vir tu tis me ri tum, da sa lu - tis e xi tum, da pe ren ne gau di um.

Musical notation for the third line of the hymn. It consists of a single staff in G major (one sharp) with a treble clef. The melody continues. The lyrics are written below the staff, with red solfège syllables: La, Sol, Mi m, Do, Si m, Mi m.

31 A - - - men - , Al le lu - ia.

Musical notation for the fourth line of the hymn. It consists of a single staff in G major (one sharp) with a treble clef. The melody continues. The lyrics are written below the staff, with red solfège syllables: Mi m, Re, Mi m, Si m, Mi m.