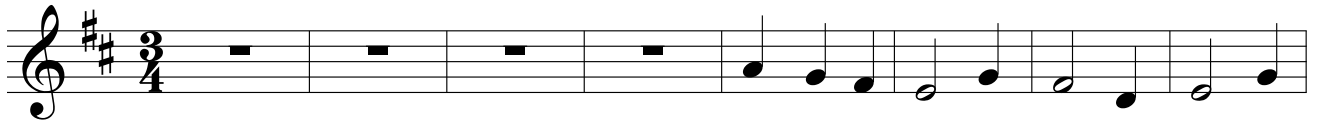
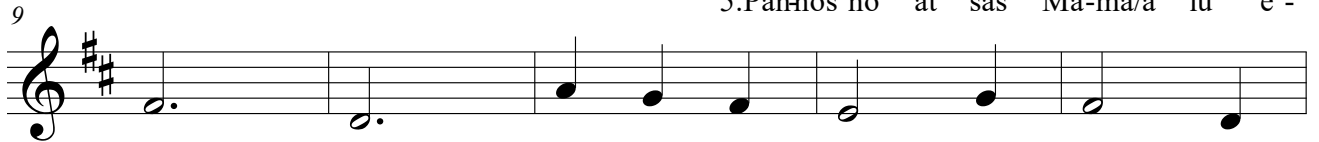


Notte de chelu

Musica: A. Sanna (1902-1982) - P. Casu (1878-1954)
 Arm. T. Loddo (2011)



1. Not-te de che-lu/es cu - sta d'o - gni
 2. Is - s'a las - sa du su ghe - lu lu -
 3. Su - bra sa pa - za l'a - na col - lo -
 4. Pus-tis sun sos pa - sto - res a - cu -
 5. Pannos no at sas Ma-ma/a lu e -



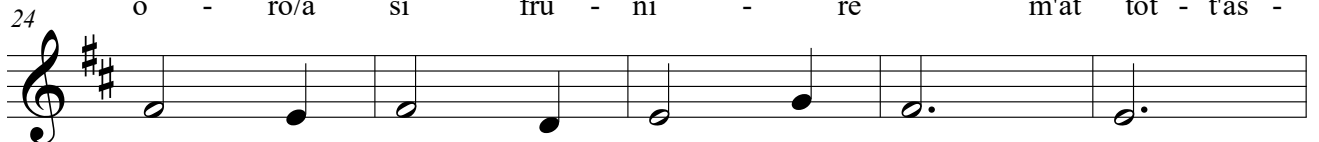
si - nu de al - le - gri - a si sen -
 ghen - te e ben - ni - d'est a sa grut -
 ca - du ca non ba - i - at la - cu/a
 di - dos che po - ve - rit - tos a lu
 sti - re, ma sa lu - ghe l'hat chel - fi



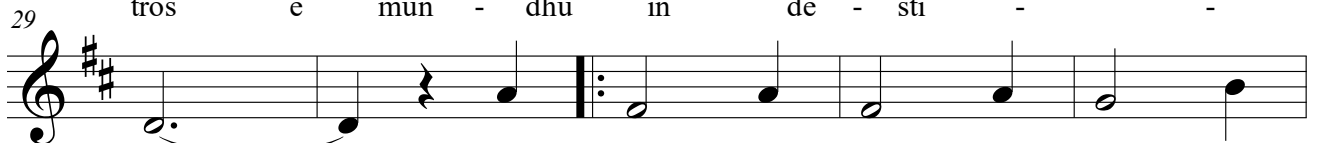
tit bun - da - re, ca in sa grut - ta/es
 ta/a pe - na - re, che fiz - zi - ghed - du
 re - po - sa - re, ma sos an - ge - lo
 sa - du - ta - re E tra lu - ghe de
 d'am - man - ta - re No at pren - dhas né



na - du su Bam - bi - nu, da e s'in
 de - po - ve - ra zen - te e fit su
 l'a - na/a - col - te - gia - du tra sas is -
 che - lu si son bi - dos E tot - tu
 o - ro/a si fru - ni - re m'at tot - t'as -

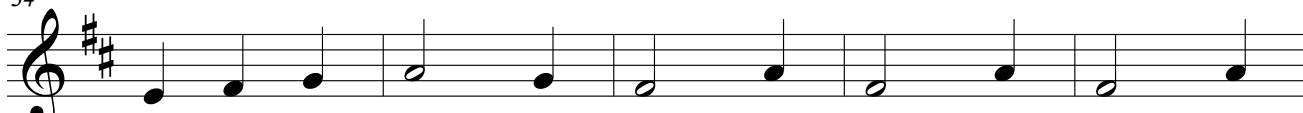


fer - ru pro nos li - be - ra -
 fiz - zu de su re di - vi -
 tel - las fa ten - dhe ca - mi -
 an bi - d'o - ro/in su ter - ri -
 tros e mun - dhu in de - sti -




re. _____
 nu. _____
 nu. _____
 nu. _____
 nu. _____
 Es na - du/es na - du/es na - du

34




su — Bam - bi - nu, e - ni - de/e - ni - de

39




tot - tus a l'am - mi - ra - re, e - ni - de/a

44




l'a - do - ra - re, e - ni - de/a l'a - do -

49



ra - re a l'a - ma - re. Es ma -

54



- - re.